

SMWA + SMO skid steer

150-300 bar | 50-140 l/min

Professional greenspace maintenance on compact loaders

The compact mulchers SMWA skid steer and SMO skid steer mulch grass and brush up to 5 cm [2"] and 7 cm [2.8"] in diameter.

These machines are particularly suitable for the maintenance of greenspace. They efficiently cut and mulch grass and light brush. Typical applications are on construction sites, in parks, on roadsides and on farms.

Standard version and specifications

- > SMWA skid steer mulches grass and branches up to 5 cm [2"]Ø
- > SMO skid steer mulches wood, grass and branches up to 7 cm [3"]Ø
- > Working speed 3-10 km/h
- > Chassis made of high tensile steel S420
- > SAE skid steer attachment interface, floating to follow the contours of the ground
- > Variable displacement motor
- > Belt transmission
- > Adjustable rear hood M-FLAP with rubber protection
- > Front protection with metal flaps
- > Adjustable support roller
- > Triple helical rotor with flails
- > 2 rows of tempered counter cutters

Optional configuration and accessories

- > Rotor with Y-flails
- > Roller scraper
- > Universal attachment for wheel loader



[YouTube www.youtube.com/seppimulcher](https://www.youtube.com/seppimulcher)

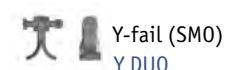
Specifications • SMWA skid steer		
Working width	155 cm [61"]	175 cm [69"]
Overall width	167 cm [66"]	187 cm [74"]
Depth	90 cm [35"]	90 cm [35"]
Height	95 cm [37"]	95 cm [37"]
Weight · base value w/o options	445 kg [980 lb]	496 kg [1.090 lb]
Belts	3	4
SMW flails standard	15	18
Flails Y DUO option	27	33

Specifications • SMO skid steer	
Working width	200 cm [79"]
Overall width	215 cm [83"]
Depth	110 cm [43"]
Height	110 cm [43"]
Weight · base value w/o options	685 kg [1,510 lb]
Belts	5
SMO flails standard	21
Flails Y DUO option	39

Tools • SMWA skid steer



Tools • SMO skid steer



High-performance hydraulic drive

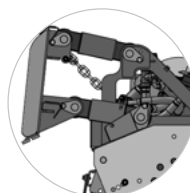
The transmission system of **SMWA skid steer** and **SMO skid steer** adapts to motors with hydraulic flow rates from 50 to 140 l/min.

HYDRAULIC DRIVE

Pressure	150-300 bar [2,175 - 4,350 psi]
Required hydraulic flow SMWA	50-105 l/min [13 - 28 gpm]
Required hydraulic flow SMO	60-140 l/min [16 - 37 gpm]
Required hydraulic hoses	3 (pressure, return, drainage)
Case drain pressure	max. 1.5 bar



SMWA skid steer *



Floating attachment
to follow the contours
of the ground

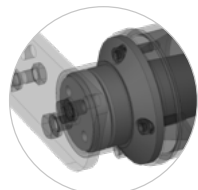
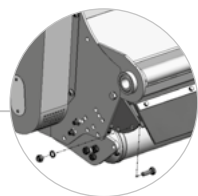
FLOAT

Chassis made of
high tensile steel

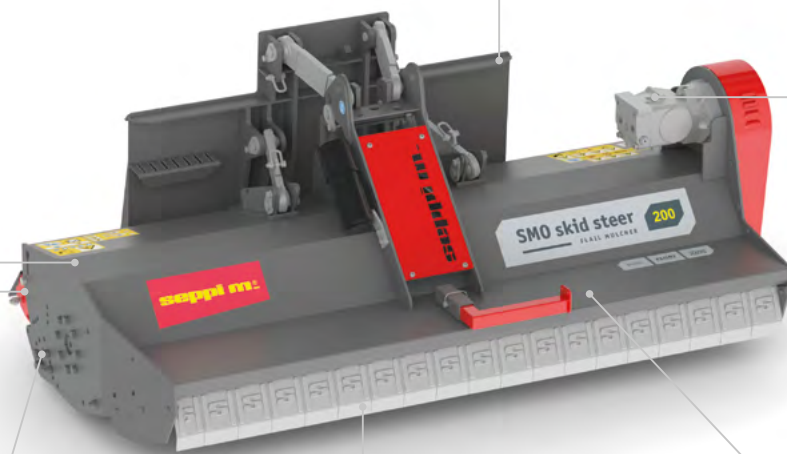
S420

Adjustable hood
to set the degree of
mulching

M-FLAP

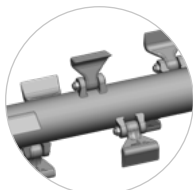


Reinforced
bearing



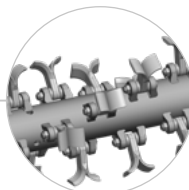
SMO skid steer

Variable displacement
piston motor (option)



Standard rotor
with SMW/SMO flails

HELIX ROTOR
TECHNIQUE



Optional rotor
with Y flails



Tempered counter
cutters for a perfect
mulching result

2 COUNTER
CUTTERS