

H5 rc

rc = radio controlled

Team your radio-controlled carrier with the H5 rc flail mulcher for uniform mulching on the most challenging terrain.

The H5 rc mulcher is robust yet lightweight, performing efficiently on grassland and areas with dense grass and light brush. When teamed with a radio-controlled tool carrier, like the MAX le, with its hydraulically assisted floating device, attachments are highly mobile, allowing them to adapt to the terrain during operation. Its hardened steel flails and counter cutters can handle material up to 5 cm in diameter. Both the durable flails and counter cutters are replaceable, ensuring a consistently clean cut. Additionally, the chassis is reinforced with wear plates, which can be replaced after demanding seasons for extended durability.

Standard version and specifications

- > Mulches grass and brush up to 5 cm [2"] Ø
- > For vehicles 30-80 HP
- > Chassis made of high tensile steel S420 with internal replaceable WEAR PLATES
- > Interface predisposed for an attachment plate
- > 3 belts transmission
- > Variable displacement motor 22-45 cm³ with relief valve
- > Rear protection with rubber flap, front with chains and rubber flap,
- > Support roller 133 mm Ø [5"], adjustable in height, 4D-ROLLER: reinforced bearings and roller
- > Triple helical rotor HELIX ROTOR with SMW flails
- > Replaceable tempered COUNTER CUTTERS

Optional configuration and accessories

- > Rotor with knives Y DUO
- > Pivoting interface plate with hydraulic side shift 55 cm [22"] for MAX 50 le
- > Pivoting interface plate with hydraulic side shift 55 cm [22"] for MAX 75 le
- > Hoses with quick coupling for mulcher-carrier connection for MAX le



www.youtube.com/seppimulcher

Specifications • H5 rc			
Working width	135 cm [53"]	155 cm [61"]	175 cm [69"]
Overall width	147 cm [58"]	167 cm [66"]	187 cm [74"]
Depth	82 cm [32"]	82 cm [32"]	82 cm [32"]
Height	80 cm [31"]	80 cm [31"]	80 cm [31"]
Weight (base value w/o options)	385 kg	410 kg	490 kg
Fixed hammers	12	15	18
Y flails	24	27	33

Tools



SMW



Y

High-Performance Hydraulic Drive

H5 rc is a powerful flail mulcher with small dimensions for remote controlled vehicles.

The motor with a variable displacement of 22-45 cm³ is the best choice for typical applications of this machine.

An independent hydraulic system is recommended.



HYDRAULIC DRIVE

Pressure 150-300 bar [2,175 - 4,350 psi]

Required hydraulic flow 45-115 l/min [12 - 30 gpm]

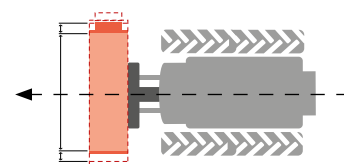
Required hydraulic hoses:

3 (pressure, return, drainage)

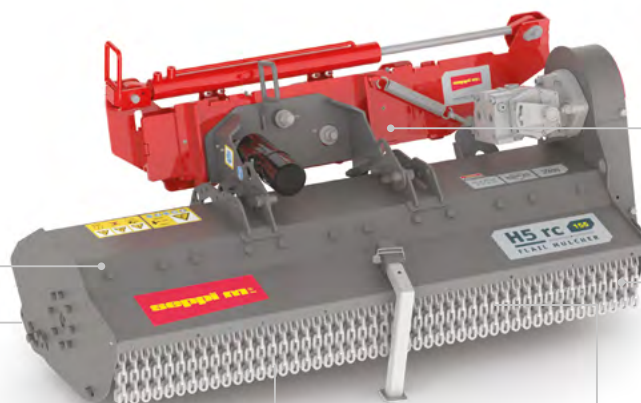
Side shift: 1 double acting

Strong and robust chassis made of high-tensile steel, with replaceable wear plates

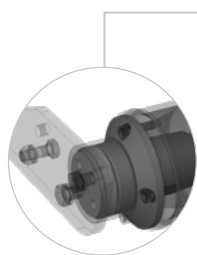
S420



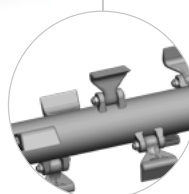
Pivoting interface plate with hydraulic side shift 55 cm [22 inch] option available for MAX 50 le and MAX 75 le



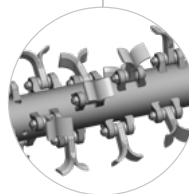
Standard front protection with chains and additional rubber flap (see photos on the left page)



Support roller, adjustable in height
Reinforced bearing and roller



Standard rotor with SMW flails



Optional rotor with Y flails



Tempered counter cutters for a perfect mulching result



Low power consumption at maximum throughput with HELIX ROTOR technology

