

# R20 pick-up cl

max. 20 cm | 8 inch

150-300 bar [2,175-4,350 psi]  
90-160 l/min [24-42 gpm]

## Pick-Up Mulcher for Compact Loaders

**R20 pick-up cl** simplifies the work, regardless of whether the terrain needs to be kept free of branches lying around or prunings and harvest residues have to be cleared. The RIC rotor mulches hard prunings with a diameter of up to 20 cm; it also works easily in stony fields. The branches are collected by the pick-up rotors and the RIC rotor drives its carbide tools against the tempered counter cutters - the material shredded in this way becomes particularly homogeneous. In a single operation, the wooden material becomes fine mulch. It is spread over the ground and generally decomposed within one processing cycle.

This version was specially developed for compact loaders, it convinces with its hydraulic system and ensures perfect ground-contour following.

## Standard version and characteristics

- > Mulches wood up to 20 cm [8"] Ø and occasionally larger diameters
- > Chassis and radial rotor sections made of wear-resistant steel AR400
- > SAE skid steer attachment interface
- > Transmission with 5 belts
- > Variable displacement motor 29-58 cm³ with relief valve
- > Dashboard with 2 manometers
- > Hoses with quick coupling for mulcher-loader connection "flat face ISO16028"
- > Pick-up rotors
  - Hydraulic hood with pick-up rotor,
  - Lower pick-up rotor,
  - each rotor with motor and hydraulic system
- > RIC - Radial Interference Cut
  - Helical RIC rotor with MINI TIP RIC hammers with tungsten carbide tip
- > 4 rows of replaceable tempered counter cutters
- > Rubber gauge wheels, adjustable in height

## Option

- > 1/2" polycarbonate impact resistant shield for loader. Replaces original glass shield. Excluding installation.



[www.youtube.com/seppimulcher](https://www.youtube.com/seppimulcher)

## Specification · R20 pick-up cl

Working width	cm [inch]	175 [69]
Overall width	cm [inch]	252 [99]
Depth	cm [inch]	150 [59]
Height	cm [inch]	100 [39]
Weight	kg [lb]	1.600 [3,530]
Weight · compact loader	kg [lb]	3.800 [8,400]
Belts	qty	5
Fixed hammers	qty	33

## TOOLS



Fixed hammer  
MINI TIP RIC

## R20 pick-up cl · Features

AR400

- Chassis and rotor profiles are made of wear-resistant steel.
- Operates at a fast and constant speed.
- Picks up and shreds 100% of the material in a single pass.
- Long service life of cutting tools.

### HIGH-PERFORMANCE HYDRAULIC DRIVE

Variable displacement motor	<b>VARIO FLOW™</b> 29-58 cm <sup>3</sup>
Pressure	150-300 bar [2,175-4,350 psi]
Required hydraulic flow	90-160 l/min [24-42 gpm]
Required hydraulic hoses	3 (pressure, return, drainage)
Case drain pressure	max. 1.5 bar
On-board power supply	12v in cab plug required

Dual pressure gauge  
for RIC rotor and pick-up system



VARIO FLOW motor to drive the RIC rotor  
Dedicated hydraulic system  
for pick-up rotors with auxiliary gear pump,  
driven of the RIC rotor inertia

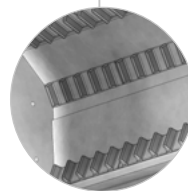
Hydraulic floating hood:

- The closed position with its tight chamber creates optimal crushing conditions
- Opens automatically when high piles of wood occur, picks it up and feeds the material to the inner rotor

Lower pick-up rotor

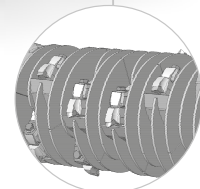


Rubber gauge wheels support the rotor on uneven grounds and if there are stones



Tempered counter cutters  
for a perfect mulching result

**COUNTER CUTTERS**



Radial interference cut rotor  
and MINI TIP RIC hammers  
with tungsten carbide tips

**CARBIDE RIC**