

H 7

 5-15 tons [11k-33k lbs]

 max. 7 cm [3 inch]

Hydraulic Flail Mulching Head for tracked or wheeled excavators from 5-15 tons

This versatile mulching head is a very solid and robust machine for tidying and regularly maintaining grass and brush areas.

Thanks to the roller and hood adjustments, this machine can be used for both mowing and mulching and processes material up to 7 cm in diameter.

This model offers a wide range of attachment options to meet your requirements. Thanks to the interface of your choice, the machine will adapt optimally to the ground when the carrier vehicle is traveling. The permanent support of the roller produces a clean cut without damaging the sward.


Standard version and specifications

- > Mulches grass and brush up to 7 cm [3"] Ø
- > Excavator category 5-15 tons [11,000-33,000 lbs]
- > Universal attachment interface
- > 4-belt transmission
- > Variable displacement motor VARIO FLOW 29-58 cm³
- > Adjustable front hood
- > Front protection with chains
- > Rear protection with rubber flap
- > Support roller, adjustable in height
- > Triple helical rotor with SMO flails
- > Replaceable tempered COUNTER CUTTERS

Optional configuration and accessories

- > Individual interface plate for an excavator arm
- > Mechanical float adapter
- > 190° rotation plate
- > Pendulum adapter



 www.youtube.com/seppimulcher

Specifications · H7

	cm ["]	125 [49]	150 [59]	200 [79]
Working width	cm ["]	140 [55]	165 [65]	215 [85]
Overall width	cm ["]	97 [38]	97 [38]	97 [38]
Depth	cm ["]	57 [22]	57 [22]	57 [22]
Height	cm ["]	410 [900]	470 [1,040]	570 [1,260]
Weight · base value w/o options	kg [lbs]	4	4	4
Belts	qty	12	15	21
SMO flails · standard	qty			

Tools



Flail
SMO

High-performance hydraulic drive

This mulching head is driven by a motor with a variable flow rate of 55-150 l/min.

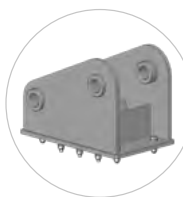
HYDRAULIC DRIVE	H7
Pressure	100-300 bar [1,450-4,350 psi]
Case drain pressure	max. 2 bar [22 psi]
Required hydraulic flow	55-150 l/min [11-40 gpm]

Required hydraulic lines:

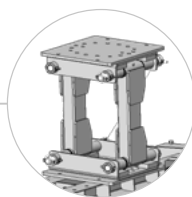
3 (pressure, return, drain)



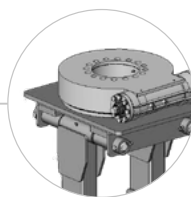
Strong and robust chassis made of high-tensile steel, with replaceable wear plates.



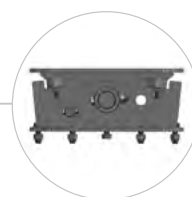
Interface plate for excavator arm(option)



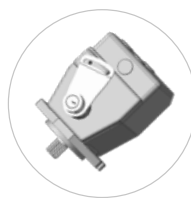
Float adapter to follow the contours of the ground (option)



Hydraulic rotation plate 190° (option)



Pendulum adapter (option)

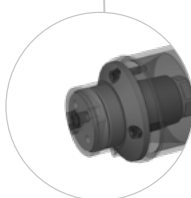


Variable displacement motor

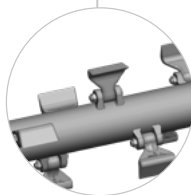


**LOW
PROFILE**

Rubber protection and chains prevent material ejection

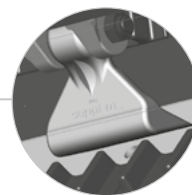


Reinforced bearing for a durable roller



Standard rotor with SMO flails

HELIX ROTOR



Tempered counter cutters for a perfect mulching result

2 COUNTER CUTTERS