

# H 3

 2-5 tons [4,4k-11k lbs]

 max. 3 cm [1 inch]

## Flail mulcher for attachment to hydraulic booms or excavators.

The lightweight H3 for mini excavators is ideal for maintaining green that is difficult to reach like waysides and riverbanks, and it mulches grass and bushes up to 3 cm [1 inch] in diameter. This mulcher is particularly productive despite the low hydraulic power demand. The casing is made of wear resistant steel, the adjustable support roller is reinforced and the float adapter is part of the standard configuration.


### Standard version and specifications

- > Mulches grass and brush up to 3 cm [1"] Ø
- > Excavator category 2-5 tons [4,400-11,000 lbs]
- > Chassis made of high tensile and wear-resistant steel AR400
- > Universal attachment interface
- > Float adapter
- > 3-belt transmission
- > Transmission via motor of choice
- > Front protection with chains
- > Rear protection with rubber flap
- > Adjustable support roller
- > Triple helical rotor with SMW flails

### Optional configuration and accessories

- > Y knives on shackle
- > Y knives Y-DUO
- > Individual interface plate for an excavator arm
- > 190° rotation plate
- > Hydraulic motors of choice
  - Variable displacement motor VARIO FLOW 22-45 cm<sup>3</sup>
  - Gear motor 11 cm<sup>3</sup>
  - Gear motor 17 cm<sup>3</sup>
- > DRAINLESS system with pressure accumulator including hoses and check valve



 [www.youtube.com/seppimulcher](https://www.youtube.com/seppimulcher)

### Specifications • H3

	cm ["]	60 [25]	85 [33]	105 [41]	125 [49]
Working width	cm ["]	60 [25]	85 [33]	105 [41]	125 [49]
Overall width	cm ["]	72 [28]	97 [38]	117 [46]	137 [54]
Depth	cm ["]	80 [31]	80 [31]	80 [31]	80 [31]
Height	cm ["]	66 [26]	66 [26]	66 [26]	66 [26]
Weight · base value w/o options	kg [lbs]	150 [330]	181 [400]	217 [478]	245 [540]
Belts	qty	3	3	3	3
SMW flails · standard	qty	6	9	9	12
Y knives on shackles · OPT-031	qty	12	15	21	24
Y knives · OPT-458	qty	9	12	18	24

### Tools



Flail  
SMW



Y knife on shackles  
OPT-031



Y knife  
OPT-458  
Y-DUO



## High-performance hydraulic drive

For this machine SEPPi M. offers both a variable displacement motor and various gear motors with relief valve.

The transmission system of the mulching head **H3** requires hydraulic flow rates from 20 to 90 l/min.

On request the mulcher comes with the **DRAINLESS** system, which is ideal for small excavators without a case drain hose. In this case the maximum hydraulic flow is recommended up to 50 l/m [13 gpm]\*.

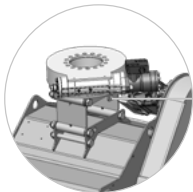
Your SEPPi M. dealer will help you choose the optimum motor for your application.

HYDRAULIC DRIVE	H3
Pressure	150-300 bar [2,175-4,350 psi]
Case drain pressure	max. 1,5 bar [22 psi] *
Required hydraulic flow	20-130 l/min [5-34 gpm]*

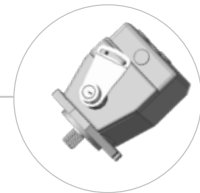
**Required hydraulic lines:**  
3 (pressure, return, drain)

### AR400

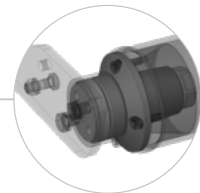
Robust chassis  
made of wear-resistant steel



Hydraulic rotation  
plate 190°  
(option)



Several motors of  
choice - here: variable  
displacement motor

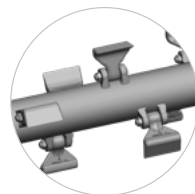


Reinforced bearing  
for a durable roller

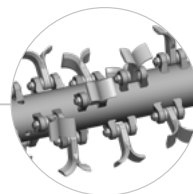
With the standard  
float adapter  
the attached mulcher  
follows the contours of the ground



Rubber protection  
and chains prevent  
material ejection



Standard rotor  
with SMW flails



Optional rotor  
with Y knives